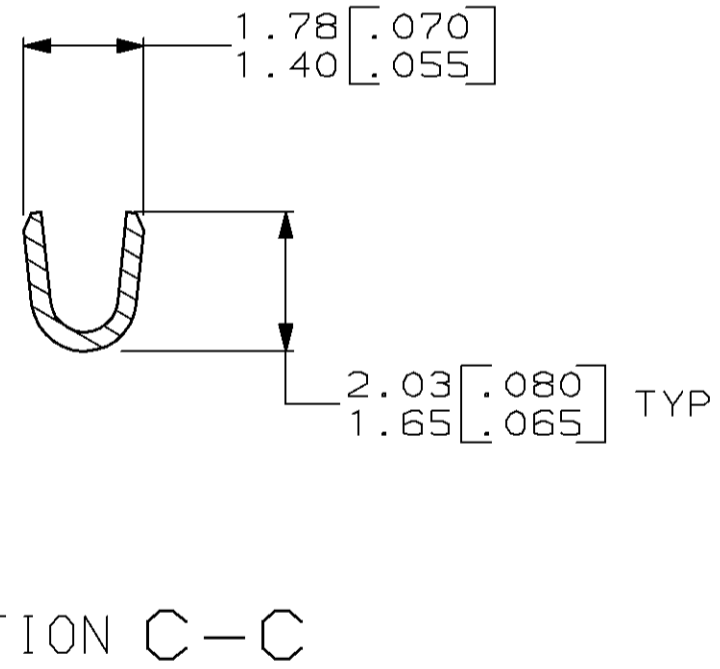
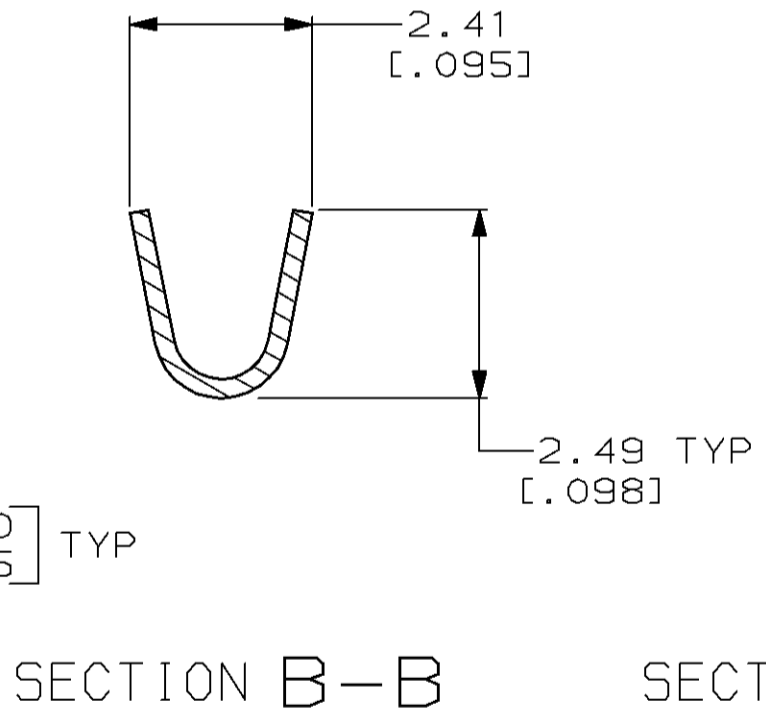
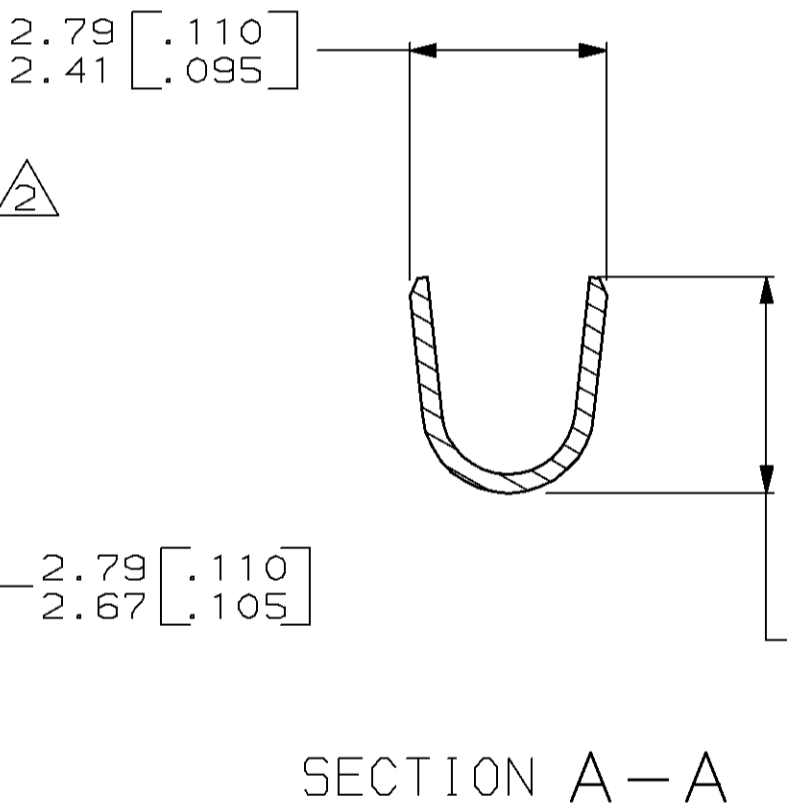
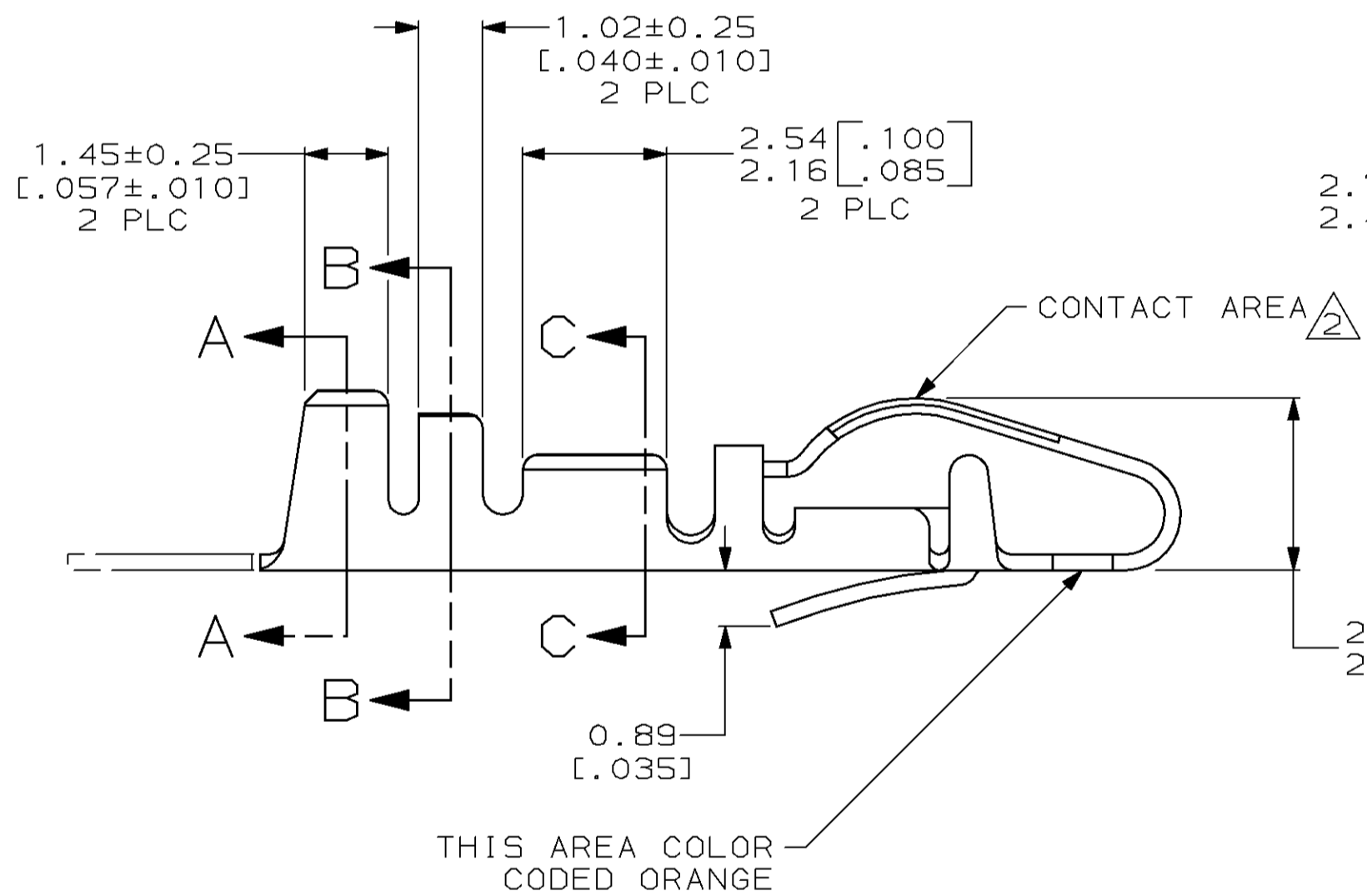
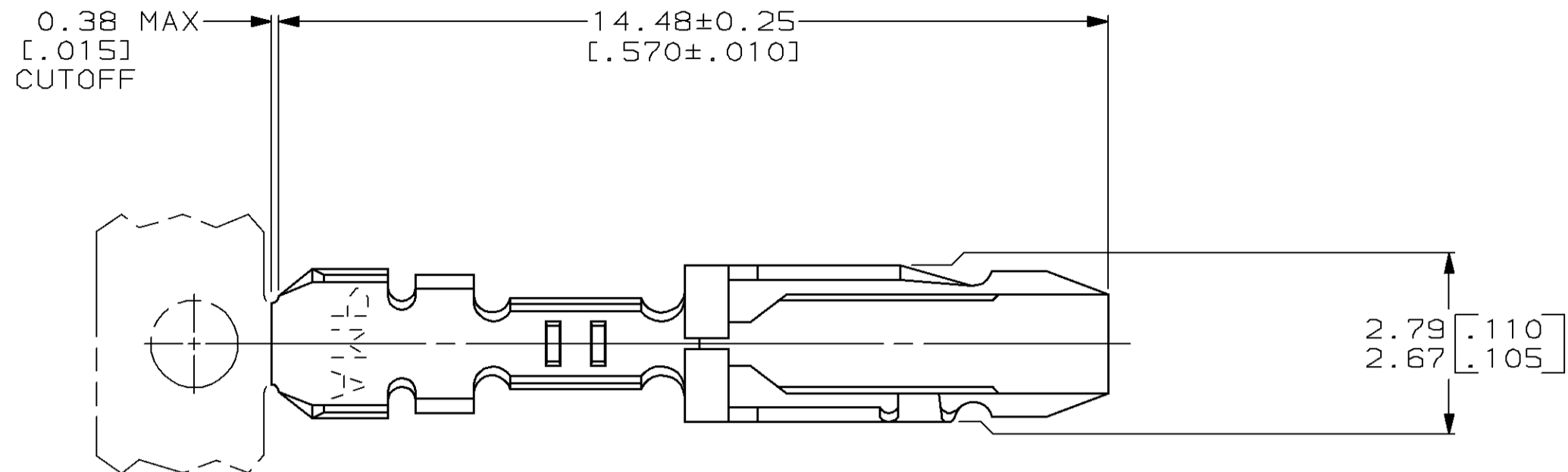


THIS DRAWING IS UNPUBLISHED. RELEASED FOR PUBLICATION
 © COPYRIGHT 19 BY AMP INCORPORATED. ALL RIGHTS RESERVED.

| LOC | | DIST | | REVISIONS | | | |
|-----|-----|-------------|---------------------------------------|-----------|------|---|--|
| P | LTR | DESCRIPTION | DATE | DWN | APVD | | |
| FT | 22 | J | REDRAWN W/O CHANGE PER EC 0010-424-96 | 28 AUG 97 | - | - | |



- 1 PHOSPHOR BRONZE.
- 2 0.76µm [.000030] MIN GOLD IN CONTACT AREA, GOLD FLASH ON REMAINDER OF CONTACT, BOTH OVER 1.27µm [.000050] MIN NICKEL.
- 3. INSULATION RANGE: 1.27-1.63 [.050-.064] DIA.

583990-3
PART NUMBER

| | | | | |
|--|--|---------------------------------|---|--|
| THIS DRAWING IS A CONTROLLED DOCUMENT. | | DWN D. HARDY 28 AUG 97 | AMP Incorporated Harrisburg, PA 17105-3608 | |
| DIMENSIONS: mm [INCHES] | | CHK R. STONE 04 SEP 97 | NAME N. SCHROLL | |
| TOLERANCES UNLESS OTHERWISE SPECIFIED: | | APVD N. SCHROLL 05 SEP 97 | PRODUCT SPEC - | |
| 0 PLC ±- | | APPLICATION SPEC - | | |
| 1 PLC ±- | | WEIGHT - | | |
| 2 PLC ±0.13 [.005] | | SIZE A2 | | |
| 3 PLC ±- | | CAGE CODE 00779 | | |
| 4 PLC ±- | | DRAWING NO 583990 | | |
| ANGLES ±- | | RESTRICTED TO - | | |
| FINISH 1 | | SCALE 10:1 | | |
| MATERIAL 1 | | SHEET 1 OF 1 | | |
| CUSTOMER DRAWING | | REV J | | |

583990